

Miljø @ Sikkerhet

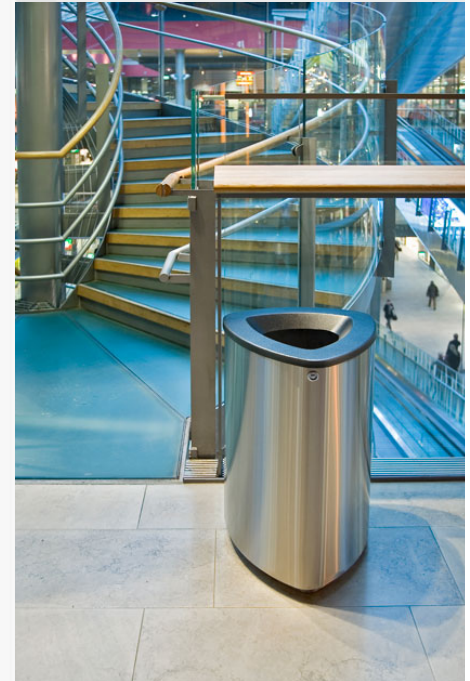
Bermuda Series



FINBIN® BERMUDA SERIES

- Bermuda Series extends the FinBin® product range with three new models.
- The new FinBin® Bermuda is designed especially for indoor use in terminals, retail facilities and hotels.
- The design enables easy and ergonomic use of the bin.

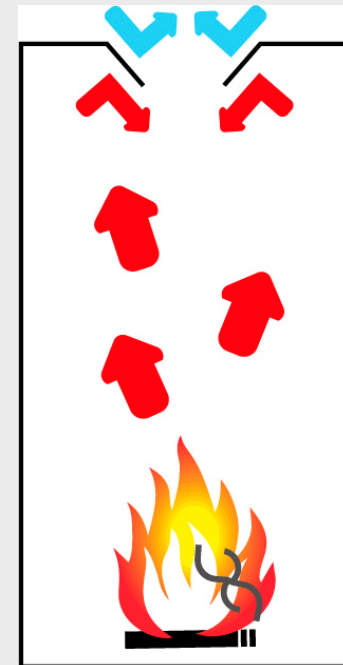
FINBIN®



Fire Safety

- FinBin® Bermuda is a self-extinguishing litter bin. If a fire starts inside the bin, the shape of the lid directs the combustion gases, cuts off the oxygen supply and extinguishes the fire.

FINBIN®



Bermuda Series: Three Models

- Bermuda 80 for waste collection
- Bermuda recycling bins for the collection of two or three waste fractions



FINBIN®



Bermuda 80

- Two standard options:
 1. Powder coated in metallic black, structured coating.
 2. Stainless steel body and metallic black lid.
- Hinged lid with lock
- Pivoted sack holder



FINBIN®



Irtokaari



Bermuda Double

- Standard option stainless steel body and metallic black lid.
- Bin divided in two compartments
- Hinged lid with lock
- Pivoted sack holders



FINBIN®





Bermuda Triple

- Standard option stainless steel body and metallic black lid.
- Bin divided in three compartments
- Hinged lid with lock
- Pivoted sack holders



FINBIN®

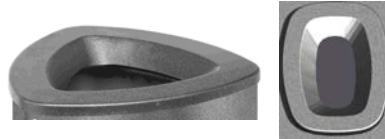




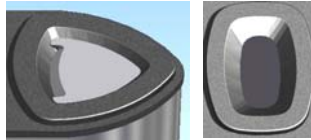
Recycling and Encoding

- There are different ways to guide the recycling; by shapes, colours, texts or combinations of these.

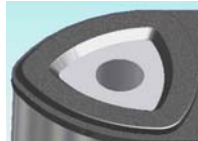
- Mixed waste



- Paper waste



- Bottles or/and cans



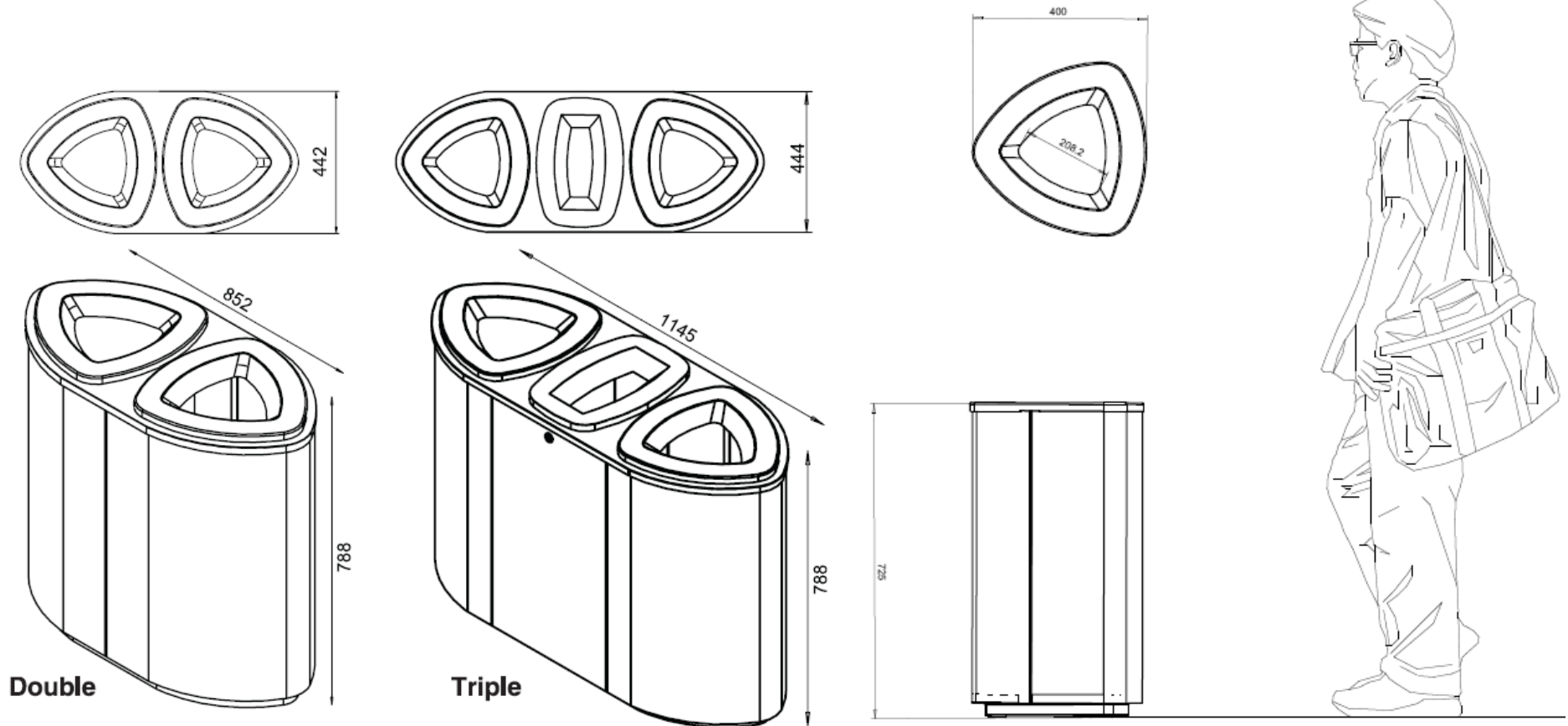
- An example of custom-made combination



Technical Details

| | FinBin Bermuda 80 | FinBin Bermuda Douple | FinBin Bermuda Triple |
|----------------------------|---|---|---|
| Material | stainless steel, AISI 430 mild steel with powder coating | stainless steel, AISI 430 mild steel with powder coating | stainless steel, AISI 430 mild steel with powder coating |
| Thickness | 1,25 mm | 1,25 mm | 1,25 mm |
| Colour | metallic black or stainless steel, black lid | stainless steel, black lid | stainless steel, black lid |
| Size | h. 720 mm, w. 410 mm | h. 788 mm, w. 852 mm | h. 788mm, w. 1145 mm |
| Features | triangle lock and hinged lid, pivoted bag frame | triangle lock and hinged lid, pivoted bag frame | triangle lock and hinged lid, pivoted bag frame |
| Capacity | 80 L | 110 L + 110 L | 100 L + 100 L + 100 L |
| Weight | 13 kg | 30 kg | 40 kg |
| Products per pallet | 18 pieces | 6 pieces | 4 pieces |

Technical Details



Materials

- Bermuda Series is designed mainly for indoor use and therefore standard materials are chosen accordingly.
- As a standard product Bermuda 80 is available either of stainless steel with powder coated lid, or both body and lid powder coated in metallic black colour.
- Standard option for Bermuda Double and Triple is stainless steel body and powder coated lid in metallic black colour.
- Stainless steel grade AISI 430 (EN 1.4016). AISI 430 is commonly used steel grade for internal architectural/construction applications. Other materials on request.
- Powder coated lid and body are made of mild steel grades.

FINBIN®

